

SKU#0700

TWO TOOLS



Digital version



FALZBENDER

BUSCHMANN TOOLS
MADE BY

FALZBENDER

ENG

The FALZBENDER is perfect hand-held set of two benders for quick and effortless double standing seam folding. The FALZ BENDER is suitable for several materials - Stainless steel, Steel, Aluminum, Copper and Zinc.

TECHNICAL DATA

WEIGHT

RED MACHINE - 6 KG

GREEN MACHINE - 4.5 KG

MAX THICKNESS

- STAINLESS STEEL: 0.5 MM
- ALUMINUM, COPPER, ZINC: 0.8 MM
- PAINTED STEEL: 0.7 MM

MAX SPEED

- 100 M² / 100 MIN

⚠ Any use beyond that scope shall be deemed as improper use!

PROFILE DIMENSIONS



- You can use both tools on one sheet simultaneously and speed up making perfect standing seam profile
- Falz benders are making perfect seam with significantly less tensions and helps to avoid curling on the roofs in comparison with profile machines
- Revolutionary invention in roofing industry. Very first bender in the world that can make two and three folds simultaneously.
- The tools are placed inside the Military grade cases with safety foam.

⚠ DO NOT use case for any other purposes than caring and storing only FALZ BENDER. DO NOT put other tools - scissors, pliers etc. in the case!



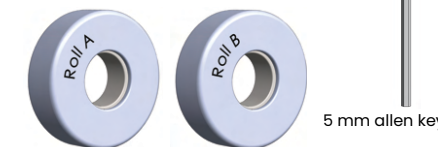
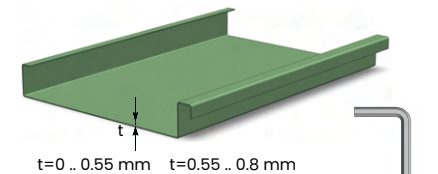
IP67 RATING MIL SPECS DEF STAN 81-41 STANAG 4280

FALZBENDER SETUP

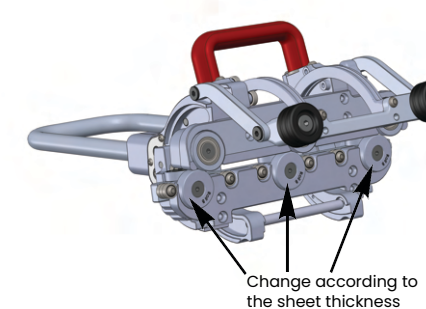
ENG

SET UP RED TOOL

- 1 Select rollers according to the sheet thickness t :
 - up to 0.55 mm - rollers A
 - from 0.55 to 0.8 mm - rollers B



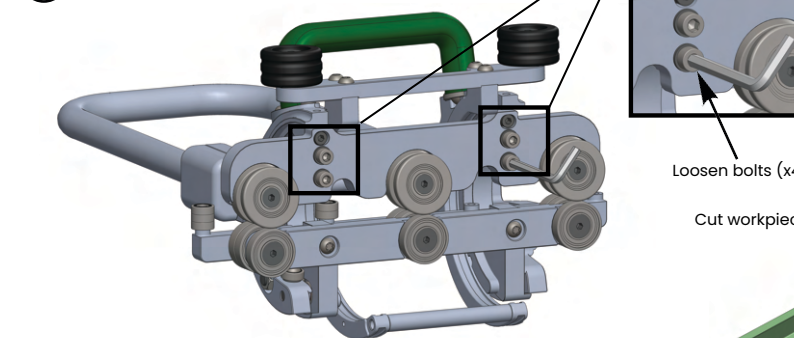
- 2 Use 5 mm allen key to change rollers and tighten screws.



Change according to the sheet thickness

SET UP GREEN TOOL

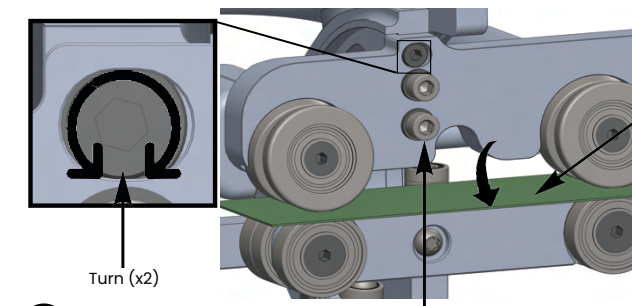
- 1 Use 5 mm Allen key to loosen bolts



Loosen bolts (x4)

Cut workpiece sample for measuring

- 2 Insert metal sheet between rollers and adjust by turning bolt with 4 mm allen key into necessary direction. Turn until rollers are pressing the sheet and then loosen the grip a bit. Sheet must go freely between the rollers.



Turn (x2)

USE for measuring

- 3 Tighten bolts with 5 mm allen key and test with workpiece

⚠ Workpiece must go freely through the rollers



VIDEO GUIDE
RECOMMENDED

Buschmann tools

INVENTION | PRODUCTION

ENG

PERFECT SET FOR FALZBENDER

DOUBLE FALZ SEAMER

After bending you will need to seam the profile. This is a perfect tool for **single and double seam**.

Usable with cordless drill



More info

FALZ CUTTER

If you mess up with the seamer this tool will become handy. Or just use it for double-lock standing seam **metal roof dismantling**.

Usable with cordless drill



More info

PERFECT BENDER

Will be like a cherry on cake to finish the job with special and **complex roof elements**.

Just remember - size matters!



More info

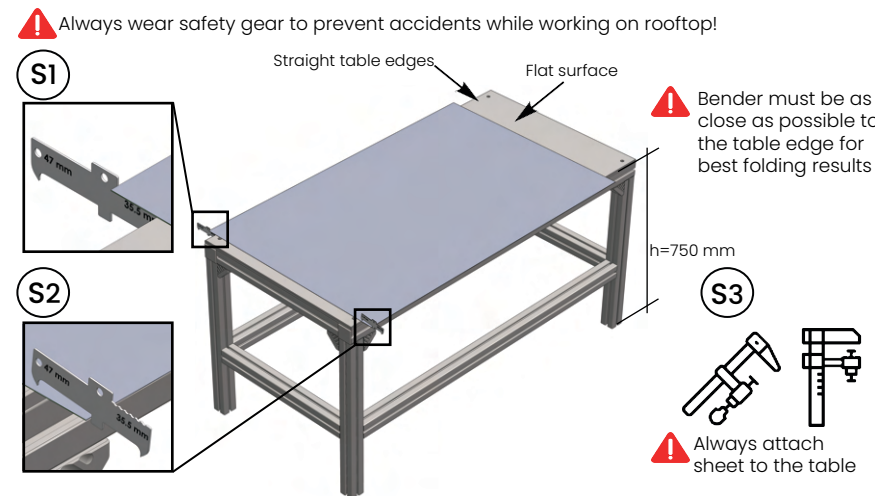
Follow us on:

Copyright © 2022 Buschmann Tools. All rights reserved.

Setting up the workspace

ENG

- Set up working table with flat surface. We recommend table height of 750 mm for most efficient use of the tools. Table width is calculated as sheet width minus 82 mm. Measure sheet offset from the table with provided ruler as 35.5 mm for the GREEN tool (S1) and 47 mm for RED tool (S2) and tightly attach a sheet to the table (with clamps etc) (S3).



Important safety information for operating the FALZBENDER

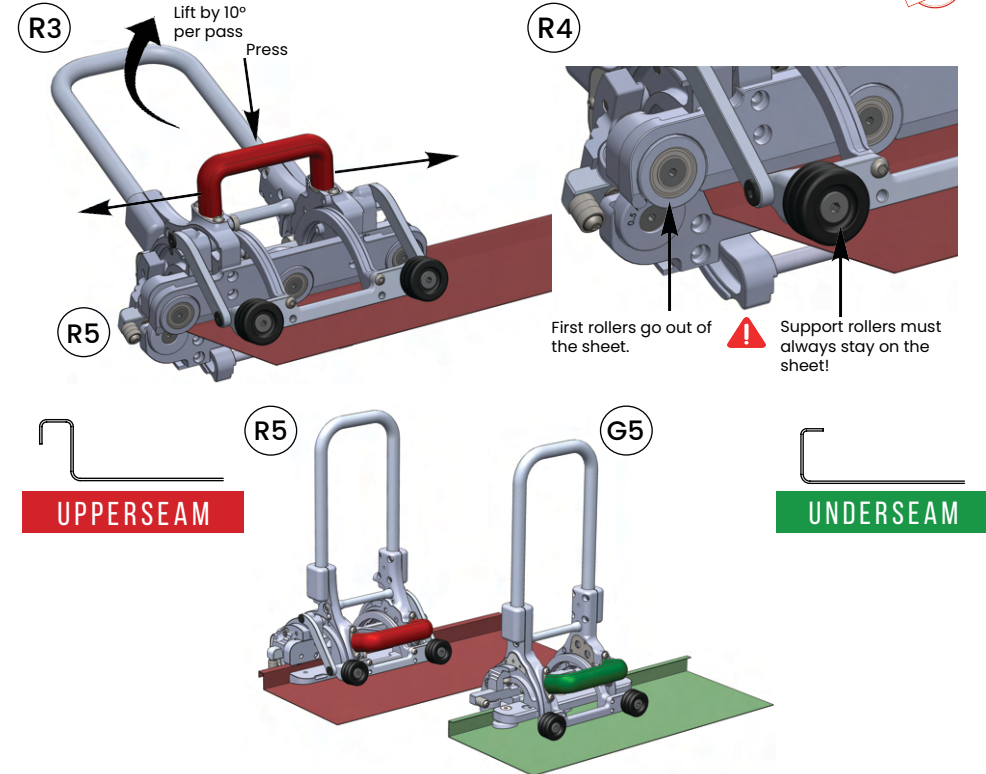
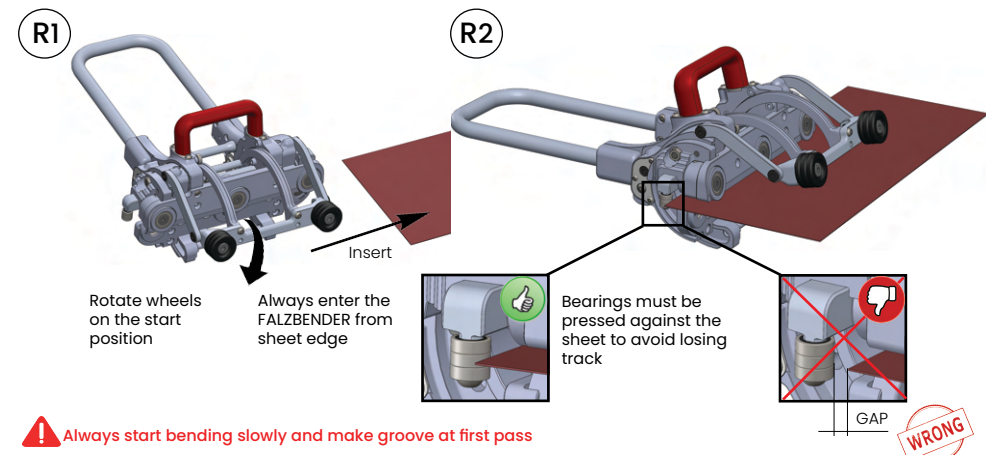
- Always use tools exactly as specified by the manufacturer in users' manuals.
- Carefully read all safety information before operating the FALZBENDER and save them for future reference.
- As a matter of principle, any person who is in charge with the start-up, operation, maintenance and repair of the tools must have read and understood the operating instructions, specifically regarding the safety.
- When working with FALZBENDER on a roof, always use roof lifeline and follow all safety regulations. Keep proper footing and balance at all times.
- Stay alert. Watch what you are doing. Use common sense. Do not operate tool when you are tired or under the influence of drugs, alcohol or medication. A moment of inattention while operating may result in serious personal injury.
- During the work hold hands, fingers, jewelry, hair, clothes and other tools at a safe distance from rotating parts. Never place your hands, fingers or tools between the rolls or in moving parts.
- Wear adequate working clothes. Long hair should be protected by a hairnet. Put on protective gloves.
- It is strictly forbidden to put and keep a wet FALZBENDER in case. If sand and dust accumulate around the rollers, clean them.
- Do not expose the FALZBENDER to extreme temperatures, it is not recommended to operate the device in cold weather (below zero degrees). Do not expose FALZBENDER to rain or use it under moist or wet condition.
- This tool is not intended for use by children. Ensure that children do not have access to it.
- When FALZBENDER and accessories are not in use, keep them in a safe place.

! DO NOT let comfort or familiarity with product (gained from repeated use) replace strict adherence to safety rules for the subject product. MISUSE or failure to follow the safety rules stated in this instruction manual may cause serious personal injury!

Operating the RED FALZBENDER

ENG

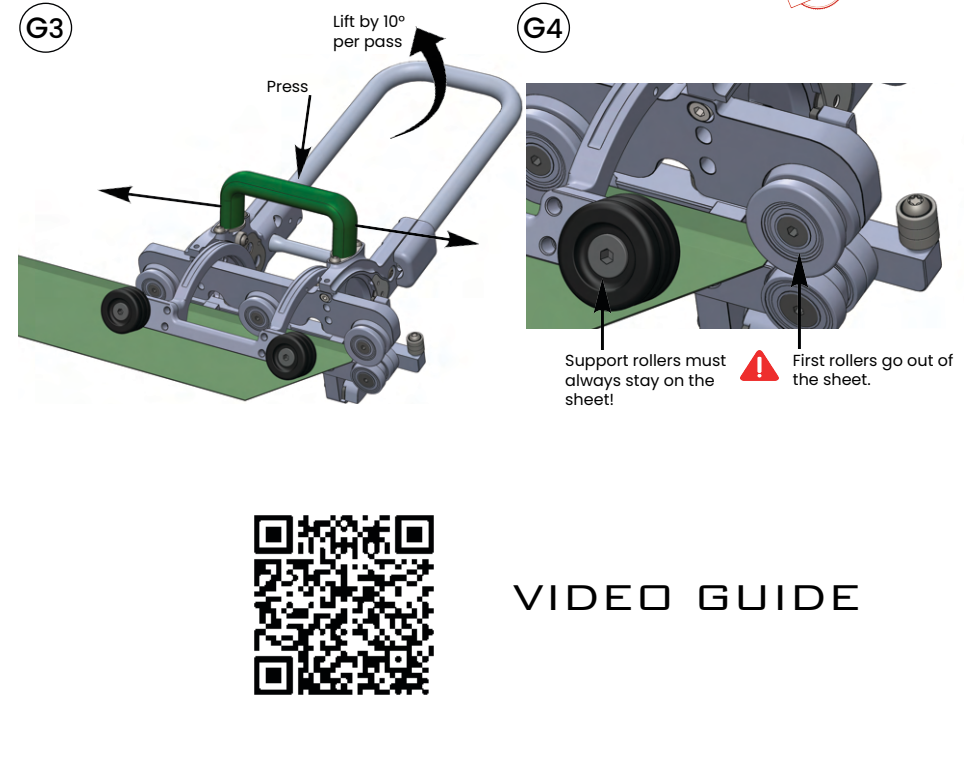
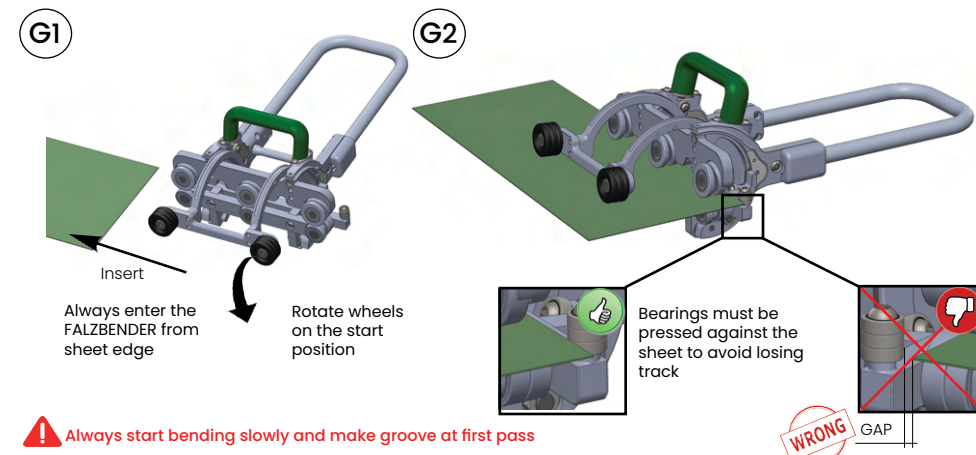
- Use RED tool to make upper seam – start with moving out the wheels and inserting the bender from the sheet edge (R1) until the sheet contact rollers (R2). Front wheels are not touching the surface yet. Start bending by simply moving bender from one sheet side to other while lifting up the handle and pushing the RED handle against sheet (R3). We recommend to add 10° on each move. First rollers must go out of the sheet to make sharp edge but front wheels must always stay on the sheet (R4)! Keep moving and lifting up the handle until you have made a perfect upper standing seam (R5).



Operating the GREEN FALZBENDER

ENG

- Use GREEN tool to make underseam – start with moving out the wheels and inserting the bender from the sheet edge (G1) until the sheet contact rollers (G2). Front wheels are not touching the surface yet. Start bending by simply moving bender from one sheet side to other while lifting up the handle and pushing the GREEN handle against sheet (G3). We recommend to add 10° on each move. First rollers must go out of the sheet to make sharp edge but front wheels must always stay on the sheet (G4)! Keep moving and lifting up the handle until you have made a perfect under-seam profile (G5).



VIDEO GUIDE

Operating instructions of FALZBENDER

ENG

- The FALZBENDER is to be operated exclusively by qualified and authorised persons who must know the national accident-prevention rules.
- FALZBENDER is designed for individual use by professionals as a precision tool that requires careful handling and usage.
- Carefully remove packaging and all promotional labels before using FALZBENDER for the first time.
- Obligated to check the FALZBENDER for externally visible damage and defects before starting work and to notify your dealer and eliminate any changes (including the operation behavior) that may affect the safety.
- Sight-checking all screws- tighten screws if necessary.

It is strictly forbidden to:

- To use these tools for other uses than shaping of specified materials indicated on the instructions.
- To bend more than one metal sheet at once.
- To install, dismantle, replace and modify components, parts and equipment not provided for in this manual without written agreement from the manufacturer.

Possible operation failure prevention

- If rolls scratch color off the metal – make sure the work area is clean from sand, dust etc..
- If rotary rolls are starting to rust – after use the tool has not been carefully cleaned.
- If the profile is curled – lift up handle less per pass. We recommend 10° per pass.
- If profile has wrong sizes – make sure that bearings are pressed against the sheet as specified in (G2) and (R2).

Care, maintenance and storage of FALZBENDER

- Clean the tools every time after using them.
- Clean FALZBENDERS from moisture, dust and sand.
- Always keep gears clean.
- Keep the motion parts free from dust, sand and moisture.
- Check all screws periodically.
- It is strictly forbidden to put and keep wet or damp FALZBENDER in the cases.

Warranty

We guarantee that all FALZBENDER is made of high quality materials and does not have any manufacturing defects. In case your device turns up the following defects, we will eliminate them in accordance with the law free of charge. Therefore, we give 1 (one) year limited warranty on our tools from the date of invoice. Limited warranty applies only to first sale. You must contact the company that has sold the product to file claims. Be sure that You have the purchase document! The device must be delivered for repair in a complete set.

If FALZBENDER is repaired by an unqualified person, we can no longer guarantee the quality of the device. Also, we can not guarantee the quality of the device if:

- the tool is mechanically damaged, dropped off or otherwise broken;
- have been used on incorrect working methods;
- have been used with unsuitable accessories;
- the tool is used for unforeseen purposes;
- the tool is used after detection of a defect;
- the tool used by a person without the necessary skills;
- the tool was uncared for;
- the construction and parameters of the tool have been changed.

The FALZBENDER is a complex combination of mechanical parts and has a lot of moving and wearing off parts. Wearing off parts are normal phenomenon, not a production defect. In result of normal usage, worn parts will not be exchanged for free. Wearing parts are: Handle, Protectors, Gears, Rolls and all other moving Parts. Be sure to save the Purchase Document, Receipt and the Instructions Manual. Make sure the Device Model and Serial Number and Date of Purchase are correctly marked on the Purchase Document.

Thank You for purchasing the FALZBENDER!