



ROOF & FAÇADE AS STRONG AS A BULL!

PREFA'S COMPLETE SYSTEMS
MADE OF ALUMINIUM



WWW.PREFA.COM

OUR SATISFIED CUSTOMERS ARE OUR GREATEST MEASURE OF SUCCESS

COUNTRIES WITH PRODUCTION PLANTS

AUSTRIA 3182 Marktl
3100 St. Pölten
GERMANY 98634 Wasungen

SALES OFFICES

FRANCE 68127 Sainte-Croix-en-Plaine
ITALY 39100 Bolzano
POLAND 02-295 Warsaw
SWEDEN 218 45 Vintrie
SWITZERLAND 4704 Niederbipp
SLOVAKIA 949 01 Nitra
CZECH REPUBLIC 193 00 Prague
HUNGARY 2045 Törökbálint
UNITED KINGDOM Warwick CV34 4HL

EXPORT COUNTRIES

Belgium Luxembourg
Denmark The Netherlands
Ireland Norway
Croatia Slovenia

PREFA TRAINING CENTRES

EXTERNAL TRAINING CENTRES



FACTS AND FIGURES



SERVICES

Whatever you have in mind, we're here for you!

PREFA, THE STRONG AND RELIABLE COMPANION

PREFA has always been a reliable partner, supporting your renovation and new build projects for many years. We offer valuable support throughout all phases of implementation.

CUSTOMER SERVICE AVAILABLE FOR YOU

Each project is individual and every building owner is looking for the best solution. No matter what questions you may have about your project or our products, we will be delighted to help you by phone or email.

And if you require further expertise, we will gladly refer you to the appropriate specialists. You will find our detailed contact information on our website at [US.PREFA.COM/CONTACT](https://us.prefa.com/contact).

OUR PHOTO SERVICE — YOUR HOUSE WITH THE PREFA LOOK

Would you like to see what your house would look like with a PREFA roof or PREFA façade? At [US.PREFA.COM/SERVICE](https://us.prefa.com/service), we will create a photo montage for you free of charge and send it to you.

- STEP NO. 1 Upload a maximum of two photos of your house.
- STEP NO. 2 Select the desired PREFA product.
- STEP NO. 3 Select your desired colour (up to three standard colours).
- STEP NO. 4 Enter your contact details, click on Send – and your request will be sent for processing!



STORM-PROOF

- 1** Every individual roof and façade product is firmly attached to minimize the risk of storm damage.

With the unique, concealed fastenings and the special installation technique with offset joints, your PREFA aluminum roof and PREFA façade are able to withstand even high wind speeds. The number of fasteners can be increased depending on the wind load, and the type of fastening (nailed or screwed) can be adapted accordingly.

LIGHTWEIGHT

- 3** Light in weight yet high in quality

At just 2.6 kg/m², a PREFA roof weighs only a fraction of a conventional roof (approx. 35–55 kg/m²). Therefore, the weight on the roof structure of a typical detached house is reduced by up to ten tonnes! The light weight of aluminum also has a positive influence on transport and labour.

RUST-FREE

- 2** PREFA roofs and façades are completely weatherproof and guaranteed rust-free.

Aluminum forms a protective layer which constantly self-regenerates to protect itself from damage. In addition, most PREFA roofs and façades products are provided with a high-quality coil-coating finish.

BREAK-PROOF

- 4** PREFA aluminum roofs and façades withstand even the worst weather conditions.

Not even heavy snow loads, extreme temperature fluctuations or bad weather conditions pose a problem for PREFA aluminum roofs and façades. The reason for this lies in the particularly good material properties and durability of aluminum.



Building: Bivacco Claudio Bredy
Product: PREFALZ
Colour: P.10 black
Location: Avise (Italy)
Architectural design: BCW Collective
Installed by: Chenevier spa

ATTRACTIVE

5 | A unique design for your building!

PREFA offers infinite design possibilities. Choose from a variety of shapes, formats, colours, installation patterns and surfaces. In the complete system, each product, including accessories, can be perfectly colour-coordinated – as well as the innovative solar roof, to achieve a homogeneous, elegant look.

COLOUR-RESISTANT

6 | With PREFA, the colour of your choice remains just the way it is.

Thanks to a special coating layer, PREFA product surfaces are highly resistant to temperature and weathering. The reason for this is the coil-coating system which is applied in up to 20 processing steps.

GREAT FOR RENOVATIONS

7 | The lightweight material means that there is no need to build an expensive supporting substrate.

Due to structural engineering reasons, old roof structures often have to be prepared during roof renovations so that they can cope with the extremely heavy load that they are subjected to by modern roof tiles. PREFA enables you to omit this task: However, with the much lighter PREFA aluminum roof, there's no need to make any additional reinforcements.

COMPLETE SYSTEM

8 | Roof, façade, solar system, and many more well-coordinated products

Not only is PREFA the strong roof specialist, it also produces high-quality products for façades, solar, roof drainage and flood protection systems — tested and coordinated system components for the outer building shell — installed solely by trained specialist companies.

SUSTAINABLE

Aluminum is 100% recyclable.

Aluminum can be recycled as often as necessary without loss of quality — and the best thing about it: PREFA products already consist of up to 87% recycled aluminum. In addition, 100% of the electrical power used at the Marktl production site comes from renewable energy. Furthermore, 99% of the aluminum production waste is returned to the starting point.

UP TO 40-YEAR GUARANTEE

10 | Performance, material and colour guarantee

PREFA provides a 40-year colour and material guarantee on roofs and façades.* This provides you with optimum protection against breakage, corrosion (rust), frost damage, chips and blistering.

10 GOOD REASONS

**True strength knows no weakness.
Guaranteed by PREFA.**

* Information about the performance, material and colour guarantee can be found at uk.prefa.com/guarantee.



PREFA'S COMPLETE SYSTEM

Its strength is greater than the sum of all its parts.



- | | | |
|--|---------------------------------|--|
| 1. Ridge vent | snow guard system | 12. Gable fascia |
| 2. R.16 roof tile | 7. PREFALZ | 13. Box gutter (half-round gutter) |
| 3. Vent pipe cover and vent pipe | 8. PREFALZ solar panel | 14. Square downpipe outlet and square downpipe elbow |
| 4. Chimney flashing and cladding | 9. Roof anchor hook with mounts | 15. Square downpipe (downpipe) |
| 5. On-roof PV system with PREFEA solar panel mounting system | 10. Skylight trimmings | 16. Sidings |
| 6. Snow guard system | 11. Base plate | 17. Flood protection system |

The products listed are an illustrative extract from PREFA's extensive product range based on the building shown.

Not only is PREFA the strong roof specialist, it also produces high-quality products for façades, roof drainage systems, flood protection and solar panel supporting systems — tested and coordinated system components for the outer building shell — exclusively installed by trained specialist companies. With the complete system of over 5,000 different products for your roof, façade and drainage system, PREFA offers everything you need to successfully extend your home.

PERFECTLY COORDINATED FROM A TECHNICAL POINT OF VIEW

All products, mounting accessories and peripheral items are perfectly coordinated and delivered together. For example, the necessary mounting accessories are included with all the accessories.

This ensures that all parts match perfectly and the result meets the highest demands in terms of both appearance and quality.

INSTALLATION BY TRAINED PROFESSIONALS

To ensure a perfect installation, PREFA roofs and façades should only be mounted by trained professionals. This gives clients and designers maximum security.



ROOF SYSTEMS

Gables, roof hatches and curves — whether new builds or renovations, an aluminum roof adapts to virtually every roof shape. PREFA's different products ensure a technically perfect, virtually maintenance-free roof covering.



ORIGINAL ACCESSORIES

The individual components of PREFA's accessories work together perfectly, guaranteeing high fitting accuracy. Manufactured from a single source, they are delivered together with all the parts required for assembly. This ensures safety and the desired durability of a PREFA complete system.



SOLAR PANEL SYSTEMS

PREFA offers three innovative systems for using solar energy: the PREFALZ solar panel – the elegant photovoltaic on-roof solution for PREFALZ roofs and the PREFA solar panel mounting system for roof-parallel on-roof solar panel systems.



ROOF DRAINAGE

The drainage systems that have been tried and tested for years are truly outstanding with their sophisticated and detailed technical solutions. They come in many standard colours and are also available in bespoke shades, on request.



FAÇADE SYSTEMS

Aluminum façades are durable and rust-free, and are easy to clean when slightly soiled. The different systems offer flexible design possibilities and the right solution for every building.



FLOOD PROTECTION SOLUTIONS

Together with our affiliated company, Neuman Aluminium Strangpresswerk, PREFA has developed a demountable flood protection system made of aluminum. This flexible solution allows buildings and properties to be efficiently protected against damage caused by floods.





Product: DS.19 shingle
 Colour: P.10 anthracite
 Location: Selca (Slovenia)
 Installed by: Tomo Zadavec

PREFA ROOF AND FAÇADE SYSTEMS



All the strength at the top.

Optimally protected — for decades! With PREFA's aluminum roof products, you can be sure that your building is completely protected. The proven system withstands snow, storms and bad weather. Due to the special laying technique with offset joints, your PREFA aluminum roof can even withstand extreme weather conditions. What's more, the special coating layer, which is applied in a coil-coating procedure, means that PREFA product surfaces are malleable and highly resistant to temperature and weathering.





Product: Façade shingle
Colour: P.10 light grey
Location: Ebenbichl (Austria)
Architectural design: a4L-Architects
Installed by: Spenglerei Müller GesmbH



PREFA FAÇADE SYSTEMS



An extravagant appearance for many years — no maintenance required.

Storm-proof, break-resistant, corrosion-resistant — you will be won over by the robustness, durability and attractive appearance of PREFA's façade systems. Whether you wish to turn new visions into reality or renovate an existing façade, there are no limits to your creativity. The aluminum composite panels, façade shingles, façade panels FX.12, rhomboid façade tiles, sidings and many other façade products are used in classic, modern and timeless architecture. The abundance of colours and shapes make every façade unique.

QUALITY FROM ONE SOURCE

PREFA façade products are supplied as complete systems. This means that all façade components and installation accessories come from one source in tried and trusted PREFA quality. To ensure perfect installation, PREFA façades should only be installed by trained professionals. This gives owners and renovators maximum security.





SOLAR PANEL PREFALZ 500/650

The innovative PV system for PREFALZ roofs.

NEW!
Solar panel system
for PREFALZ roofs
www.prefa.solar

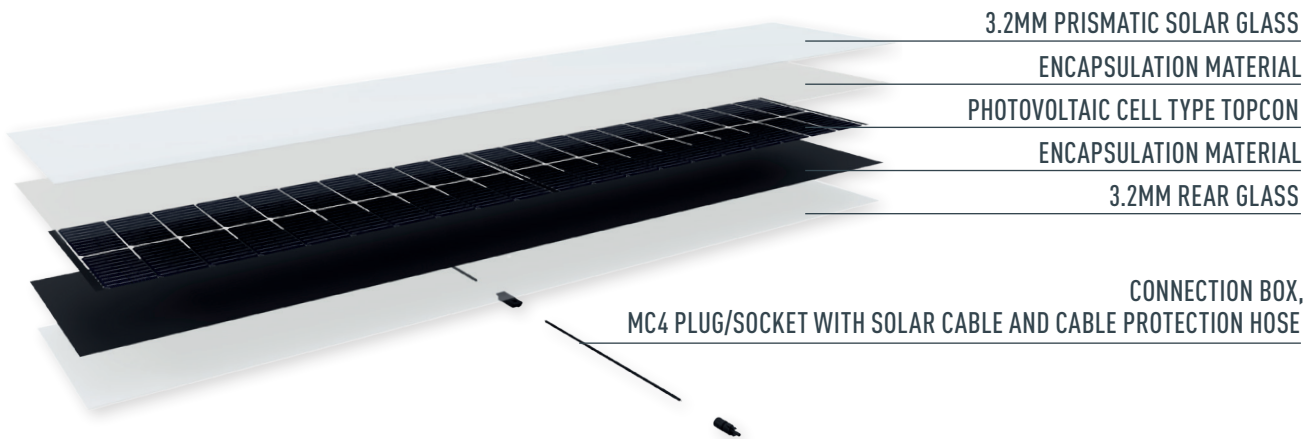
Product: Product: PREFA's PREFALZ solar panel
combined with PREFALZ
Colour: P.10 black
Location: Meschede (Germany)
Architectural design: Daniel and Caroline Berster
Installed by: Stappert Dachdeckerei

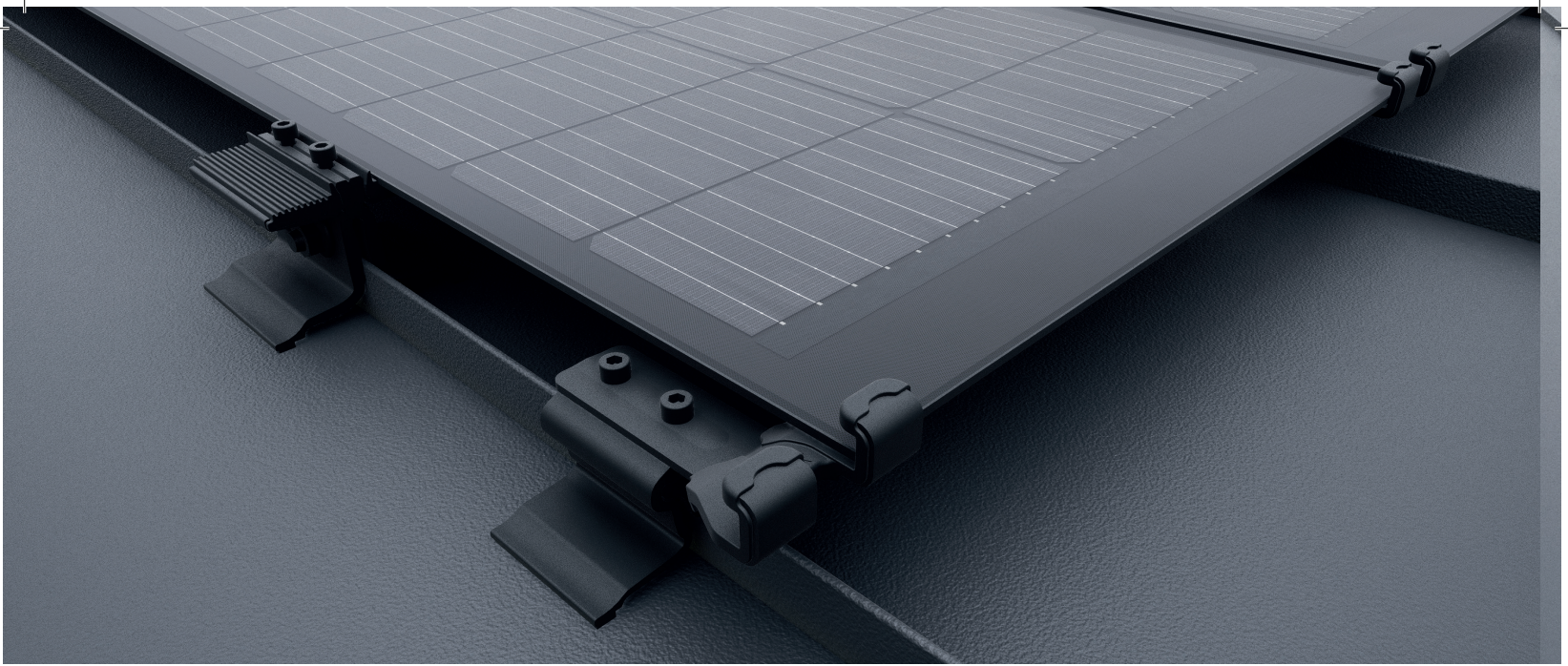


SOLAR PANEL PREFALZ

Coordinated with the **PREFALZ** roof system.

The PREFALZ solar panels are an innovative combination of glass/glass PV panels with the specially developed seam clamps and solar panel clamps in one construction part, which are attached directly to the standing seams and thus enable installation parallel to the roof with a minimum installation height. The clear PREFALZ lines are harmoniously continued, which preserves the characteristic appearance of the roof panels. The PREFALZ solar panels are available in black and are delivered with matching black anodised solar panel clamps.





BENEFITS OF THE PREFALZ SOLAR PANEL

A secure feeling of being independent.

The new PREFALZ solar panel on-roof solution turns new and existing roofs into cost-saving power plants! The robust, durable glass/glass PV panels – with particularly efficient TOPCon cell technology – fit elegantly and flat into the popular PREFALZ roof system.



MADE IN AUSTRIA

The PREFALZ solar panel is developed and produced in Austria to a high standard and is 100% compatible with PREFA's complete system.



PERFORMANCE GUARANTEE

Solar panel: 25-year product guarantee, performance-guarantee: 85% of the nominal panel performance after 25 years, additional 25-year product guarantee on the PREFA sub-structure framework.



RESISTANCE

The glass/glass PV panel is robust and durable. Equipped with the latest TOPCon cell technology, it provides 10% more performance, even in diffuse lighting conditions.



RETROFITTING POSSIBLE

Solar panels can be mounted on new PREFALZ roofs as well as retrofitted to existing PREFALZ roofs.



AESTHETIC

Parallel to the roof, preserves the character of the standing seam look, flat structure of overall system, adapted to the traywidth of the PREFALZ roofing.



INDEPENDENT, ECONOMICAL & SUSTAINABLE

The sun is always available as an energy source, the self-produced energy can be used directly, fed into the grid or stored. CO₂-friendly production site.



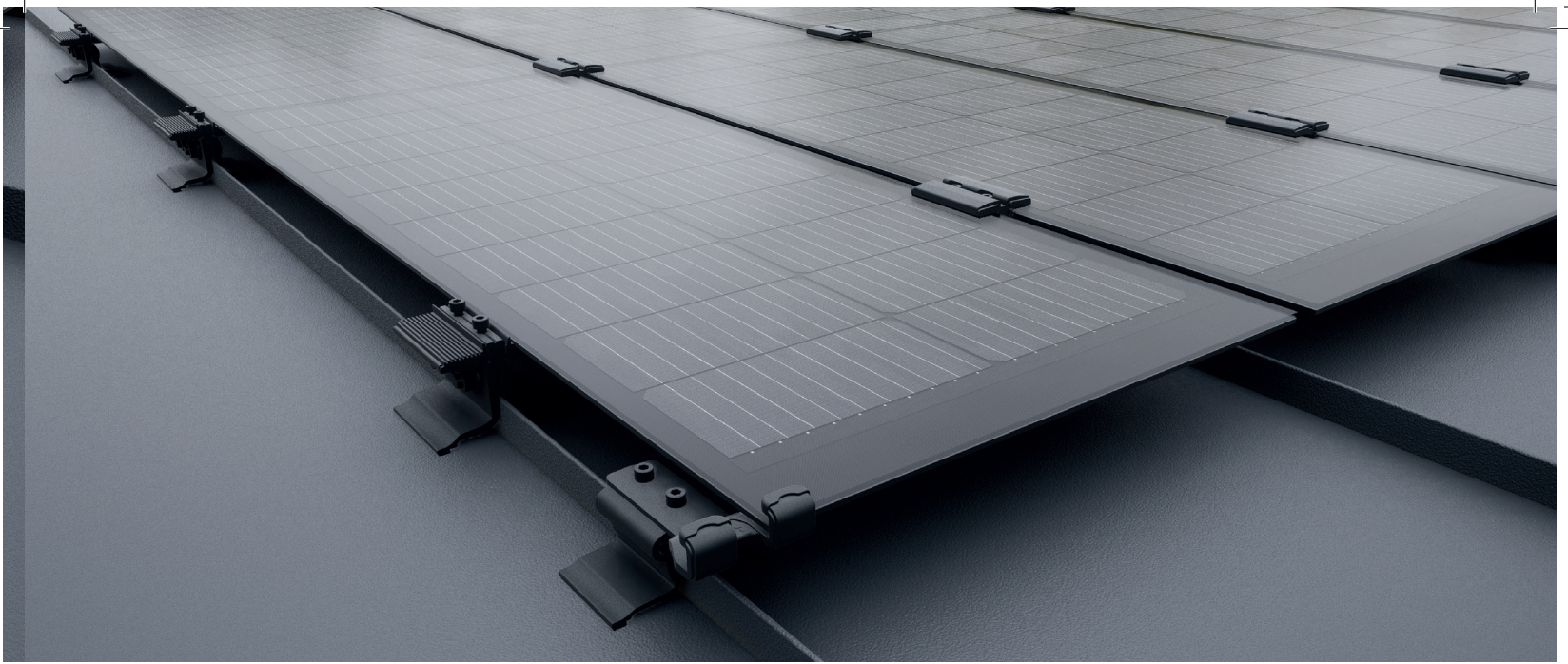
2-IN-1 TECHNOLOGY

Seam and solar panel clamp in one product, simple and fast installation due to only few components required.



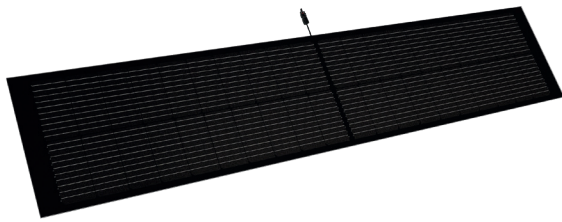
NO ROOF PENETRATION

The solar panels are attached directly to the double locked seams with panel clamps, and there is no need for the roof covering to be penetrated by screws, etc.



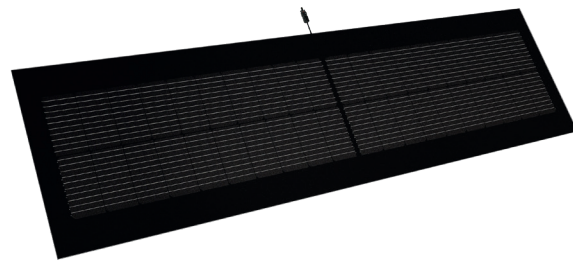
PREFA'S PREFALZ 500 SOLAR PANEL

PREFA's PREFALZ 500 solar panel has the dimensions 2,000 x 408mm and achieves an output of 150 Wp/pc. It is available in black and each panel weighs 15 kg.



PREFA'S PREFALZ 650 SOLAR PANEL

PREFA's PREFALZ 650 solar panel has the dimensions 2,000 x 588mm and achieves an output of 150 Wp/pc. It is available in black and each panel weighs 21 kg.



TECHNICAL DATA – PREFALZ 500 SOLAR PANEL

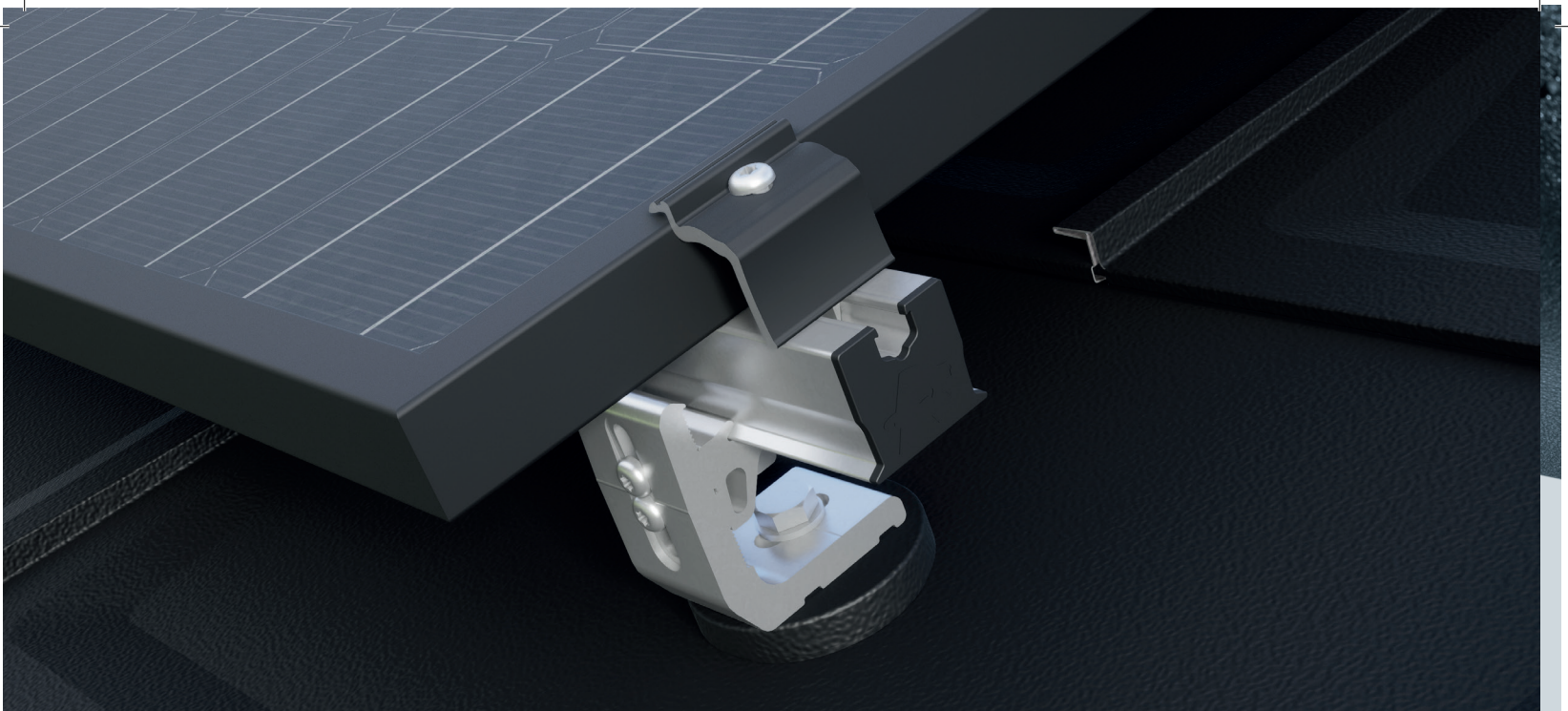
- Performance
150 Wp, required area per kWp: 5.44m²
- Dimensions
2,000 x 408mm
- Weight
15 kg (18 kg/m²)
- Cell type
TOPCon
- Material
Front glass 3.2mm
Rear glass 3.2mm
- Plug
Standard MC4 male/female connector
- Solar panel guarantee
10-year product guarantee, 25-year performance guarantee 85 %
- System component guarantee
25-year product guarantee
- Roof pitch
From 3° (5%)*
- Fastening
With a solar middle/end clamp PREFALZ 500/650 on a double-lock standing seam with solar panel anti-slip protection, the number of clamps per solar panel varies depending on the roof pitch and location.

TECHNICAL DATA – PREFALZ 650 SOLAR PANEL

- Performance
150 Wp, required area per kWp: 7.44 m²
- Dimensions
2,000 x 588mm
- Weight
21 kg (18 kg/m²)
- Cell type
TOPCon
- Material
Front glass 3.2mm
Rear glass 3.2mm
- Plug
Standard MC4 male/female connector
- Solar panel guarantee
10-year product guarantee, 25-year performance guarantee 85 %
- System component guarantee
25-year product guarantee
- Roof pitch
From 3° (5%)*
- Fastening
With a solar middle/end clamp PREFALZ 500/650 on a double-lock standing seam with solar panel anti-slip protection, the number of clamps per solar panel varies depending on the roof pitch and location.

* According to national regulations and guidelines, tested and approved for PREFALZ double-lock standing seam roofing.





SOLAR PANEL MOUNTING SYSTEM

Get your roof working for you.

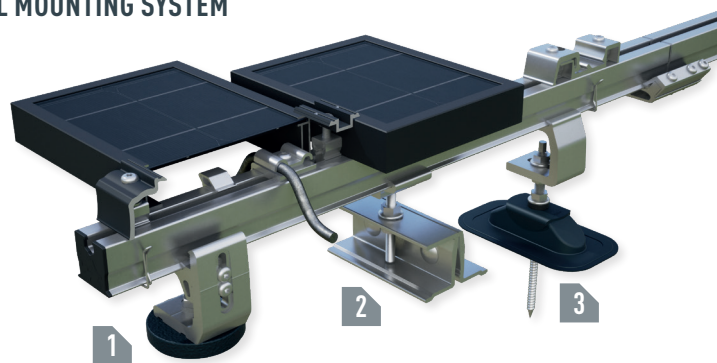
Solar energy is not just one of the most environmentally-friendly forms of energy, but it also saves the owner money. When solar panels are used, valuable raw materials are not consumed and harmful carbon dioxide is not released into the atmosphere.

SOLAR PANEL MOUNTING SYSTEM

With the solar product range, PREFA offers a sophisticated solution that perfectly matches the roof covering. In comparison with many other fasteners for solar panels, this system does not restrict the function or durability of PREFA roofing. Thanks to ongoing further development, the mounting system always remains at the cutting edge of technology. The right kind of fastener is available for every PREFA roof system — from small-format products to PREFALZ standing seams. Safety comes first, which is why advice is provided only by trained sales partners and sub-structure framework calculations are performed solely by the PREFA Product Technology department. Assembly is also only carried out by professional, skilled workers.

PREVARIO SOLAR PANEL MOUNTING SYSTEM

1. PREVARIO 3.S
2. PREVARIO PREFALZ
3. PREVARIO Sunny





ALUMINUM DRAINAGE SYSTEMS

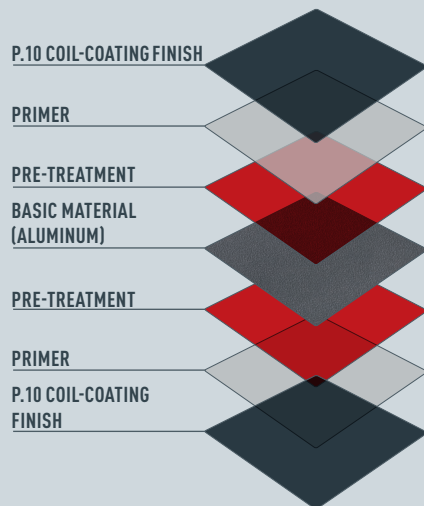


Guaranteed rust-free even after many years.



P.10 COLOUR-FAST SURFACE GUARANTEED UV-RESISTANT, COLOUR-RESISTANT AND WEATHERPROOF

With P.10, PREFA has developed a colour-resistant finish that meets even the highest quality standards. The material withstands external influences and stresses, and is UV-resistant, colour-resistant and weatherproof.



HIGHLY WEATHER-RESISTANT EVEN IN EXTREME CONDITIONS

PREFA offers a complete aluminum roof drainage system including mounting accessories from one supplier — from half-round gutters to square downpipes, and from strainers to leader heads. The gutters are produced from colour-coated aluminum coils. Thanks to the high-quality surface treatment in a coil-coating process, the paint layer remains malleable and highly resistant, even under extreme weather conditions.

NO TOUCHING UP OR REPAINTING REQUIRED

The PREFA drainage system is mainly made of aluminum so it is guaranteed to remain rust-free, fully functional and attractive even after many years. Even tedious maintenance work such as touching up or repainting is not an issue with PREFA's high-quality coatings.





FLOOD PROTECTION



Easy assembly, fast protection.

Flood protection is a central issue particularly in regions at risk. The partly demountable flood barrier, made of strong aluminum barrier panels, is used to protect buildings and property. Lightweight yet extremely robust aluminum profiles protect doors, gates, windows, garages and entire areas from penetrating flood water. Aluminum is ideal for the job as it is break-proof, rust-free and weather-resistant, while at the same time, extremely lightweight.

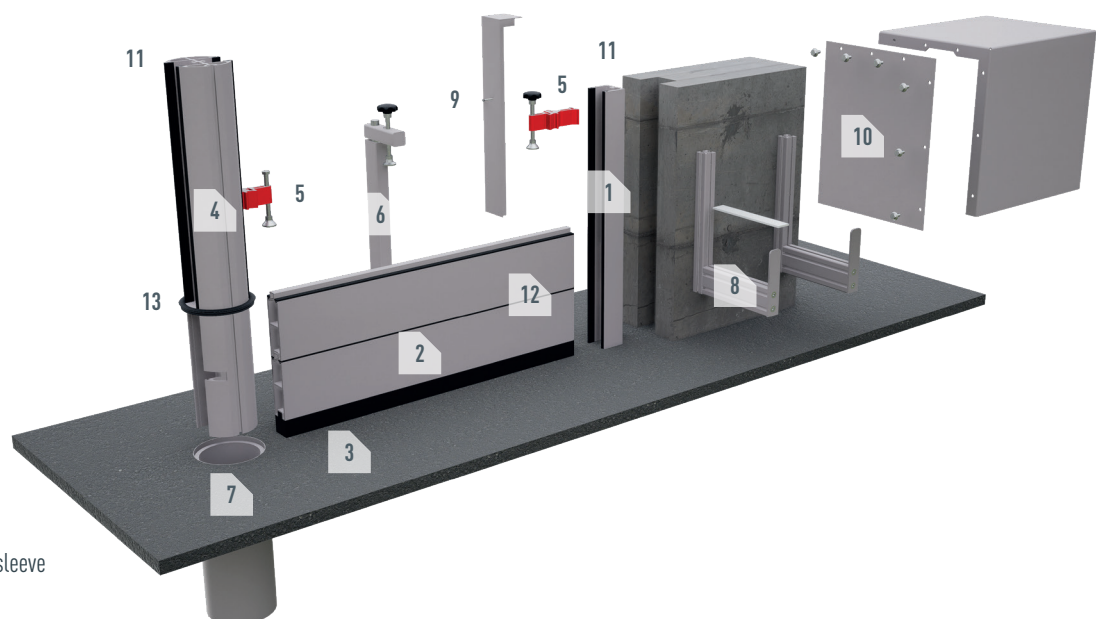
READY FOR USE AT ALL TIMES, AND VIRTUALLY INVISIBLE WHEN NOT IN USE

The extremely weather-resistant flood protection system can be mounted when needed and taken apart again, becoming virtually invisible. The permanently installed wall profiles can be colour-coordinated to match the design of your façade.

ADVANTAGES OF THE ROBUST PREFAB FLOOD PROTECTION SYSTEM MADE OF ALUMINUM

- Ready for use at all times
- Quick and easy assembly
- Lightweight
- Easy to store

1. Wall profile
2. Barrier panels
3. Ground seal
4. Centre column
5. Compression clamp
6. Retainer
7. Ground sleeve
8. Wall bracket
9. Cover
10. Storage casing
11. Base profile seal
12. Barrier panel seal
13. Seal for cover and ground sleeve





PREFA'S GUARANTEE COMMITMENT

Highest quality, produced in Austria and Germany.

The weather forecast for the next 40 years is approximately 75,000 hours of sunshine and 35,000 liters of rain per square meter. Decidedly — choosing PREFA is the right decision. Because only PREFA provides a colour and material guarantee of up to 40 years on roofs and façades. This provides you with optimum protection against **breakage, corrosion (rust), frost damage, chips and blistering.**

HOW IS PREFA ABLE TO OFFER SUCH A POWERFUL GUARANTEE?

Because PREFA aluminium roofs and façades are absolutely high-tech products, **exclusively produced in Austria and Germany.** Every PREFA product must be installed by a specialist company.

40 YEARS — PREFA EVEN GIVES IT IN WRITING

The guarantee only enters into force with a successfully issued guarantee certificate. This can be requested for free from the PREFA website. The terms and conditions are stated in the guarantee certificate along with the delivery date. PREFA provides a 25-year performance guarantee for the solar roof panel. You will find more information about the material and colour guarantee at UK.PREFA.COM/GUARANTEE.



The essential element in a PREFA project is to commission a tried and tested master craftsman's business with trained staff.

Gerald Hoppel, owner of Hoppel Dach- und Fassadensysteme Ges.m.b.H.



* The colour guarantee ensures that the P.10 painted surface is protected from chips and blistering under the terms specified in the guarantee certificate.





ROOF RENOVATION

The covering is lightweight, the roof structure remains strong.

PREFA roof systems are optimally suited for renovation projects. The high-quality aluminum products are resistant, rust-free, storm-proof and, at the same time, extremely lightweight. Another major advantage is that a PREFA aluminum roof weighs only a fraction of a traditional tile roof. The reduced load considerably relieves, and therefore conserves, the roof structure.

BEFORE



AFTER



STRUCTURES SUBJECTED TO LESS STRESS

Ideally, existing roof structures do not need to be reinforced before new roofing is applied, as the structure is subjected to less stress. However, the roof structure needs to be checked in each case during the course of every renovation. The lighter weight of the material also has an influence on transport and construction site times: the material is optimally prepared by PREFA mostly delivered by just one vehicle. That saves time and money.

FOR EVERY SHAPE OF ROOF, AND FOR ALL THE NOOKS AND CRANNIES

Regardless of the shape of your roof, aluminum offers great flexibility, both technically and visually, along with enormous creative scope. PREFA offers the right accessories not only for pitched roofs, but also for very low roof pitches. The fact that the material is so malleable and easy to work with also makes it possible to securely cover every nook and cranny, particularly in the case of old buildings. Uneven roof structures, as is often the case on old farmhouses, can also be optimally covered with a lightweight roof made of aluminum. Step by step advice for renovating your roof can be found at UK.PREFA.COM/ROOF-RENOVATION



FAÇADE RENOVATION

Finally, a beautiful façade that will last for generations.

PREFA offers the optimum façade system with a long service life for every renovation project and is virtually maintenance-free. A wide range of different façade products are available — from shingles, rhomboid tiles and panels to the stylish siding and siding.X elements. All these items are available in many different shades and offer individual design possibilities. Whether completely traditional or highly modern, your building shell can be designed according to your own individual preferences.



NEVER PAINT AGAIN

Wooden elements are often used in façade design because they give each building its own special flair. However, real wood does not have to be used. PREFA has developed a very special wood appearance for its sidings which do not need to be repainted or touched up. The aluminum façade is weather-resistant and durable while at the same time providing a natural look in the warm colours of walnut, grey oak and natural oak.



NEVER PAINT AGAIN!
A perfect wooden appearance in top quality — virtually maintenance-free



38 walnut

39 grey oak

40 natural oak



PREFA PRODUCT RANGE – ROOF AND FAÇADE

ROOF TILE

600 × 420 mm in installed area



$>12^\circ$ (2.55/12)

R.16 ROOF TILE

700 × 420 mm in installed area



$>17^\circ$ (3.67/12)

DS.19 ROOF SHINGLE

480 × 262 mm in installed area



$>17^\circ$ (3.67/12)

ROOF AND FAÇADE SHINGLE

420 × 240 mm in installed area



$>25^\circ$ (5.60/12)

RHOMBOID ROOF AND FAÇADE TILE

44 × 44: 437 × 437 mm in installed area

29 × 29: 290 × 290 mm in installed area

RHOMBOID FAÇADE TILE 20 × 20:

200 × 200 mm in installed area



$>12^\circ$ (2.55/12)

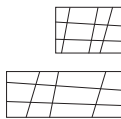


$>22^\circ$ (4.85/12)

FX.12 ROOF AND FAÇADE PANEL

700 × 420 mm in installed area

1400 × 420 mm in installed area



$>17^\circ$ (3.67/12)

PREFALZ



For roofs:

0.7 × 500 mm (19,70");

0.7 × 650 mm (25,60")

For façades:

0.7 × 500 mm (19,70")

Complementary coil:

0.7 × 1000 mm (39,40")

FALZONAL®

0.7 × 600 mm

(23,62")

Complementary coil:

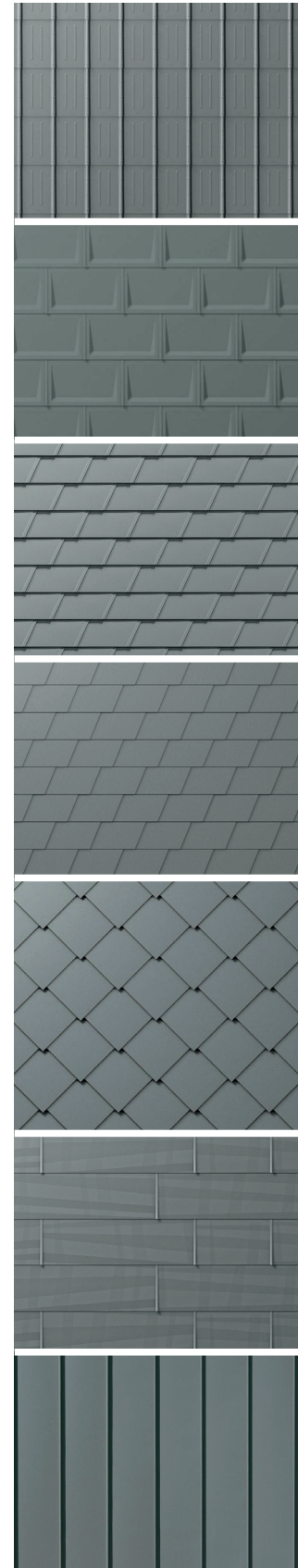
0.7 × 1,200 mm



$>3^\circ$ (0.63/12)



Can be combined with the new PREFALZ solar panel (only on the roof)



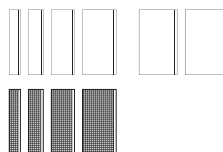
PREFA PRODUCT RANGE – FAÇADE

SIDING

138 × 0.7 mm (5,4331" × .0285)
 200 × 1.0 mm (7,874" × .0403)
 300 × 1.2 mm (11,811" × .0453)
 400 × 1.2 mm (15,784" × .0453)
 500 × 1.5 mm (19,685" × .0571)
 600 × 1.5 mm (23,622" × .0571)

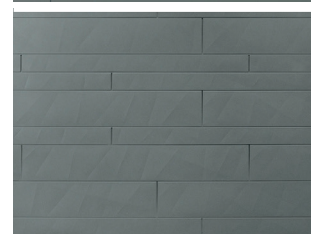
SIDING PERFORATED

138 × 1.0 mm (5,4331" × .0403)
 200 × 1.0 mm (7,874" × .0403)
 300 × 1.2 mm (11,811" × .0453)
 400 × 1.2 mm (15,748" × .0453)



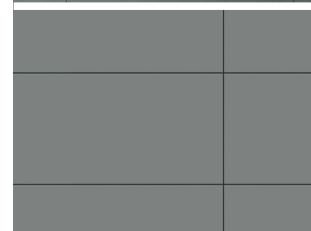
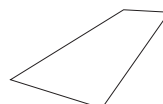
SIDING.X

138 × 1.0 mm (5,4331" × .0403)
 200 × 1.0 mm (7,874" × .0403)
 300 × 1.0 mm (11,811" × .0403)
 400 × 1.0 mm (15,784" × .0403)



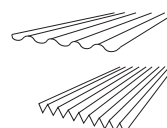
PREFABOND ALUMINIUM COMPOSITE PANEL

4010 × 1535 × 4.0 mm (157,87"4 × 60,4331"/3/19")



EXTRUDED PROFILES

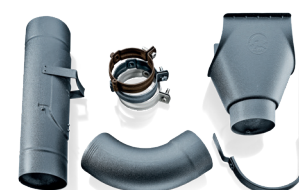
Ripple profile 10/47/2.0 mm
 Serrated profile 22/40/2.0 mm



OTHER PREFA PRODUCT RANGES

ROOF DRAINAGE

Half-round gutter 250 | 280 | 333 | 400 mm
 Box gutter 250 | 333 | 400 | 500 mm
 Edge gutter 700 × 1.0 mm
 Square downpipe 80 × 80 mm | 100 × 100 mm
 Downpipe ∅ 60 | ∅ 80 | ∅ 100 | ∅ 120 | ∅ 150 mm



PREFA SOLAR

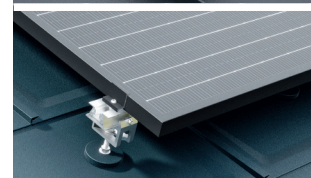
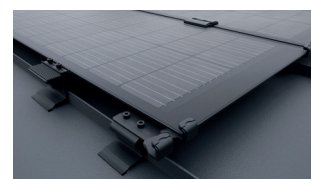
SOLAR PANEL PREFALZ

Solar panel PREFALZ 500 (2,000 × 408 mm)
 Solar panel PREFALZ 650 (2,000 × 558 mm)



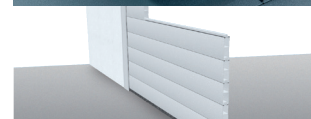
SOLAR PANEL MOUNTING SYSTEM

Supporting rails and accessories for solar panel systems



FLOOD PROTECTION SOLUTIONS

Property and perimeter protection





AS STRONG AS A BULL
ROOF • FACADE • SOLAR

STRENGTH IS OUR PROMISE.

- Aluminium, the strong material for generations
- Perfectly coordinated complete systems
- Over 5,000 products in many colours and shapes
- 25-year performance guarantee*
- Guarantee of up to 40 years on materials and colours*
- Personal, all-round service at every stage

LET'S TALK ABOUT IT.



LEGAL NOTICE

Subject to technical modifications and printing errors.
Photos: PREFA | Croce & Wir | Marion Lafogler | Werner Jäger
Printed colours may vary from the original material.
07.2025 | V1 | MF
Manufacturer: Gutenberg | 4020 Linz (Austria)

* Information about the performance, material and colour guarantee can be found at: uk.prefa.com/guarantee

WWW.PREFA.COM